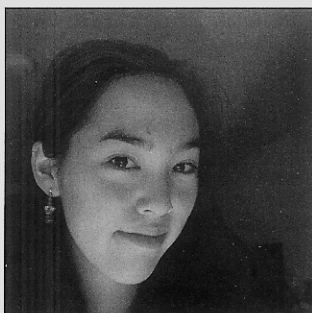


Playwrights

Lauren Yee

Recent productions:

Finalist for the Playwrights' Center's Jerome Fellowship, 2008. Finalist for the Actors' Theatre of Louisville's Heiderman Award, 2007. *Zachary Zwillinger Eats People*, The Looking Glass Theatre, New York City, 2007; Pegasus Theater Company, January 2008; North Park Vaudeville, San Diego, February 2008. *Ching Chong Chinaman*, New York Fringe Festival, August 2007. *Mother Tongue*, Provincetown Playhouse (workshop) and Eugene O'Neill Festival, January 2008.



Upcoming productions: *Zachary Zwillinger Eats People*, Smith & Kraus' *Best 10-Minute Plays of 2008 for 3 Actors*. *Mother Tongue* in *The O'Neill at Yale Anthology*.

Your aesthetic/what you're exploring in your work: At least half my plays feature characters struggling with issues of race and their place in America. As an Asian American, I find themes of race, class and gender most interesting because they influence my perspective. Colonialism, particularly indirect, modern-day forms of colonialism, continues to fascinate me to no end. I love writing about smart, well-intentioned people who still miss the point. There are so many incredibly intelligent people out there who know everything on a very intellectual level but can't relate to others in their worlds on even a basic level. I also enjoy creating plays where the words matter and where you can find pain in humor and vice versa. A good play should run the gamut of emotions.

What Melissa Hillman says about Lauren Yee:

I love Lauren's writing because of her ability to frame serious issues with humor and even absurdity. It's a much more interesting and complex way in which to engage the world than being preachy or heavy-handed.

The Process

We asked several literary managers and artistic directors to nominate several "up-and-coming" local playwrights. The top 13 were selected based entirely on the number of nominations they received. The nominators were:

Melissa Hillman, artistic director, Impact Theatre

Terence Keane, literary manager, SF Playhouse

Jim Kleinmann, artistic director, PlayGround

Amy Mueller, artistic director, Playwrights Foundation

Kent Nicholson, director of new works at TheatreWorks & coartistic director of Crowded Fire

Maryanne Olson, literary manager, Marin Theatre Company

Mark Routhier, director of artistic development, Magic Theatre

Lisa Steindler, artistic director, Z Plays

Diane Tasca, artistic director, Pear Avenue Theatre

Honorable Mentions:

Tim Barsky, Tim Bauer, Elizabeth Benedict, Stuart Bousel, Paul Braverman, Erin Bregman, Dan Carbone, Jeff Carter, Christopher Chin, Marcus Gardley, Sharmon Hilfinger, Brady Lea, Jonathan Luskin, Elyce Melmon, Ross Peter Nelson, Evelyn Pine, Martha Soukup, Michael Gene Sullivan, Tom Swift, Ian Walker and Ignacio Zulueta.